



## SHARING OUR SHORES

Phillip Island's beaches and reserves are for everyone to enjoy. We are lucky to be able to visit many of these areas with our dogs.

**Observing signs and following regulations keeps people, dogs and wildlife safe.**

### Hooded plovers

These highly threatened shorebirds nest along the high tide line or in the sand dunes during spring and summer. Eggs and chicks are well camouflaged making them difficult to see and easily stepped on. Keeping your dog on a lead and away from signed nesting areas, helps to ensure their survival.

### Short-tailed shearwaters

These migratory birds live and breed in sand dune burrows from September to May and fly to the northern hemisphere over our autumn. Please keep dogs on a lead and stay on paths - burrows are easily collapsed.

**Responsible dog owners and wildlife can live together - thank you for sharing our shores.**



Let's care for each other and our dogs by observing the regulations which are for everyone's comfort and safety.



## HERE'S HOW WE SHARE OUR BEACHES RESPONSIBLY:

- **Always check beach access signage**  
Permitted times change seasonally, so be sure to check the signs. Penalties apply for not following regulations.
- **Only use designated beach access points**  
Informal tracks can be dangerous to yourself and wildlife and walking off track can cause dune erosion.
- **Stay out of the sand dunes**  
Hooded plovers and short-tailed shearwaters breed there.
- **Keep your dog on a lead**  
By law dogs must be on a lead in all public places in Bass Coast Shire except in designated off leash areas or private property.
- **Pick up your dog poo!**  
By law all dog walkers are required to have a suitable container to clean up after their dog.
- **Register your dog**  
All dogs over three months of age must be registered.
- **Never leave your dog in a car on hot days**  
A dog will quickly overheat if left in a car on a hot day. Confine your dog to your property when you are not with it.
- **Report injured wildlife to**  
**Wildlife Victoria's 24/7 hotline on 03 8400 7300**

For further information contact;

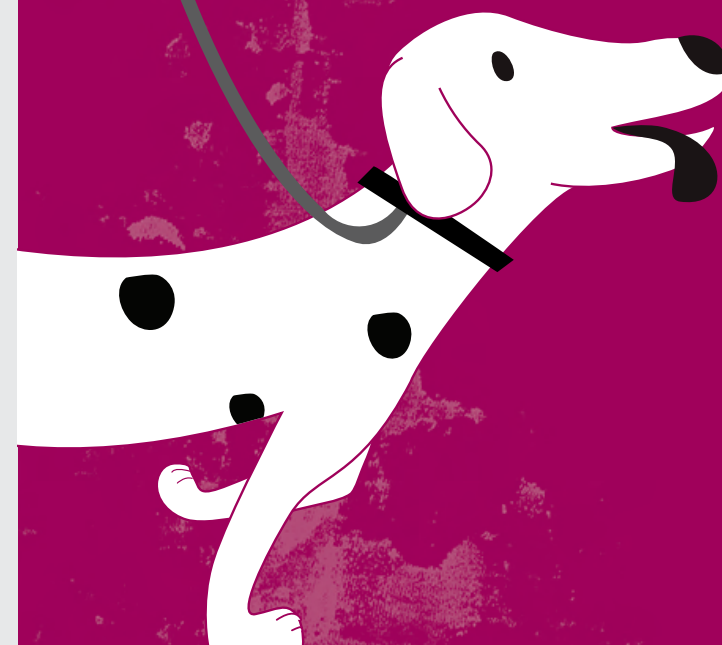
Phillip Island Nature Parks:  
**5951 2800**  
[www.penguins.org.au](http://www.penguins.org.au)

Bass Coast Shire Council:  
**1300 BCOAST (226 278)**  
or (03) 5671 2211  
[www.basscoast.vic.gov.au](http://www.basscoast.vic.gov.au)

Phillip Island  
**NATURE  
PARKS**



**Where can I  
walk my dog?**  
on Phillip Island (Milawul)




**DON'T RISK A FINE**  
**Always read the beach  
access signs.**

# WHERE TO WALK YOUR DOG

## Off Leash (all year round)

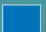
 Ventnor

## On-Off Leash (see time restrictions)

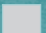
 1 May - 30 November  
On leash 9 am - 6 pm  
Off leash all other times

1 December - 31 January & Easter holidays  
On leash 10 am - 6 pm  
Off leash all other times

## On leash only (see time restrictions)

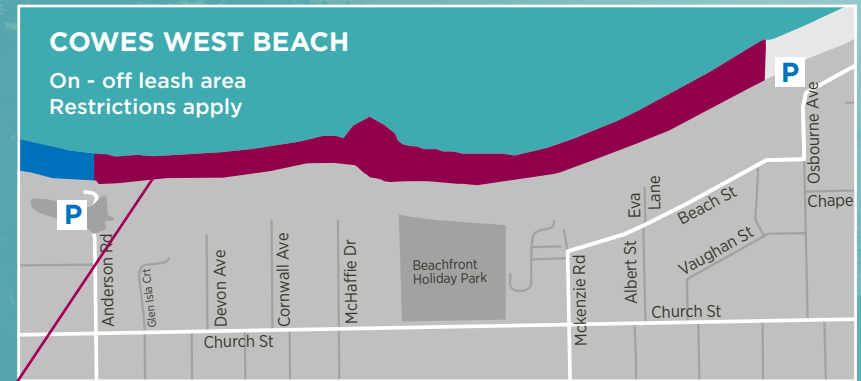
 1 December - 30 April,  
7-10 am and 5-8 pm

 No dogs anytime

 By law dogs must be on a leash in all public places in Bass Coast Shire except in designated off leash areas or private property.

 Car parking

*We acknowledge Bunurong as the Traditional Owners on which we live, work and learn. We pay our respects to their Elders past and present and acknowledge their continuous connection to land, water, sea and sky on Milawul.*



**OBSERVATION POINT**  
Significant bird habitat - no dogs in Rhyll Inlet or within 200 m of shoreline.

**BLUE GUM RESERVE**  
Off leash all year round  
80-120 Dunsmore Rd, Cowes

## When using off-leash areas:

- Carry a leash and use it immediately if the situation calls for it.
- Always keep your dog in sight and under effective voice control.
- Do not allow your dog to rush, jump on, or attack any person or animal.
- Put a leash back on if within 50 m of a signed wildlife refuge.

