



Fire Operations Plan 2019-2021



Fire operations actions

This document contains the fire prevention and preparedness works to be conducted within the Phillip Island Nature Parks (the Nature Parks) over the next three years for the period 2018/19 to 2019/20. These activities are carried out to achieve the objectives of the Nature Parks Ecological Burn and Wildfire Mitigation and Management Plan 2010-14 and the Bass Coast Municipal Fire Management Plan 2011/12 – 2013/14.

This plan only applies to land managed by Phillip Island nature Parks – see Map 1. Other Crown Land on Phillip Island managed by Bass Coast Shire Council or Melbourne Water is not included in this plan.

Fire operations are separated in to two categories:

- Fuel Reduction Burning
- Non Burn Fuel Treatments

Planned Burns

Planned burning involves the controlled application of fire during periods of lower fire risk to create an area of reduced fire fuels (twigs, bark, leaves, grass, etc) and/or promote positive ecological outcomes such as weed control or habitat modification.

It is important to understand that planned burning operations do not stop or eliminate the risk of bushfires. However firefighters have a much better chance of managing bushfires in areas where burns have been carried out.

Non Burn Fuel Treatments

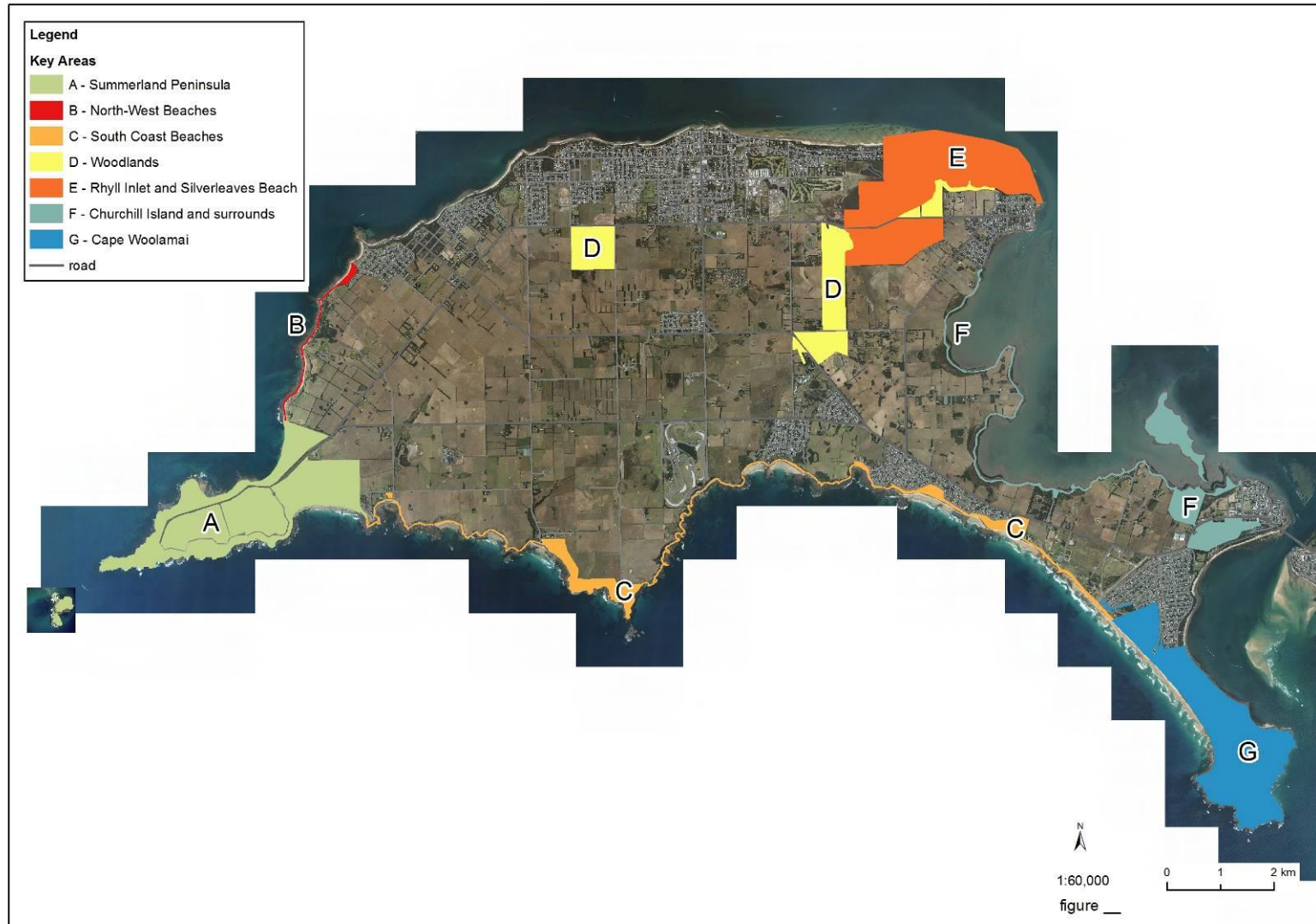
Non burn fuel treatments such as the maintenance and construction of fire control lines, fire access tracks, fuel breaks, fire infrastructure and other fuel management activities are required to support the planned burning program and create areas where bushfire suppression activities can be carried if conditions are suitable. Treatments to achieve these works can include slashing, pruning, or mulching.

Treatment Objectives

Objectives for all planned burns and non-burn fuel treatments fall under three categories:

- **Asset Protection:** To provide the highest level of localised protection to human life and property and key community assets
- **Fuel Reduction:** To reduce the speed and intensity of bushfire to protect assets including human life, property and biodiversity assets
- **Ecological:** Management of land for particular values such as improving habitat for Shearwaters by reducing weed cover and biomass.

Map 1: Phillip Island Nature Parks Key Management Areas



Summary of annual works program

Spring

- Maintain and slash all firebreaks and fuel breaks within the Nature Park, including the following areas with staff responsible:

Location	Responsible Nature Parks staff
Summerland Peninsula	Ranger in Charge and Ground Services Supervisor
Oswin Roberts, Rowell and Rhyll Swamps, Koala Conservation Centre, Fiveways Reserve and Ventnor Koala Reserve	Senior Ranger Koala Conservation Centre and Senior Ranger Woodlands
Ventnor (Cadogan Ave)	Ranger in Charge
Berrys Beach	Ranger in Charge and Ground Services Supervisor
Churchill Island and Fishers Wetland	Ranger in Charge and Churchill Island Farm Coordinator
Cape Woolamai (Princeton Ave)	Ranger in Charge
Cape Woolamai (Broadbeach Ave)	No firebreak, joint education through CFA, Bass Coast Shire Council and the Nature Park door knock and letter drop
Silverleaves east	Ranger in Charge
Newhaven Swamp (around Western Port Water pump station)	Ranger in Charge in conjunction with Western Port Water

- Clear around Summerlands wet firebreak and test
- Conduct training exercise for staff
- Audit fire equipment and PPE
- Service slip-on units

- Conduct any planned burns as per approved FOP
- Distribute media release on planned burns

Summer

- Conduct media release on general fire prevention and preparedness
- Patrol the park to ensure compliance with park regulations, in particular 'no fires' in the park
- Maintain and slash all fire breaks
- Close relevant areas to the public on Total Fire Ban Days and/or on Code Red Days as per the Nature Parks 'Severe Weather and Reserve Closure Policy'
- Conduct any planned burns as per approved FOP

Autumn

- Conduct any planned burns as per approved FOP
- Maintain and slash all firebreaks and fuel breaks

Winter

- Maintain and slash all firebreaks and fuel breaks where possible
- Prepare Draft Fire Operations Plan
- Consult internal and external stakeholders on Draft FOP
- Prepare final FOP for CEO endorsement

Fire Operations maps and tables

The following maps and tables illustrate where planned burning and other fire prevention works will take place within the Nature Park from 2019 to 2021.

These works are shown in the key to each map and include

- Planned burning;
- Slashing and mowing;
- Mulching;
- Manual thinning; and
- Burn Piles
- APZ - Asset Protection Zone - BMO (Bushfire Management Overlay) & AS 3959. Both the BMO and AS 3959 identify the separation needed for various combinations of vegetation and slope classes to reduce radiant heat to a specific level of radiant heat (Bushfire Attack Level or BAL).

Phillip Island Nature Parks: Fire Operations Plan 2019 – 2021



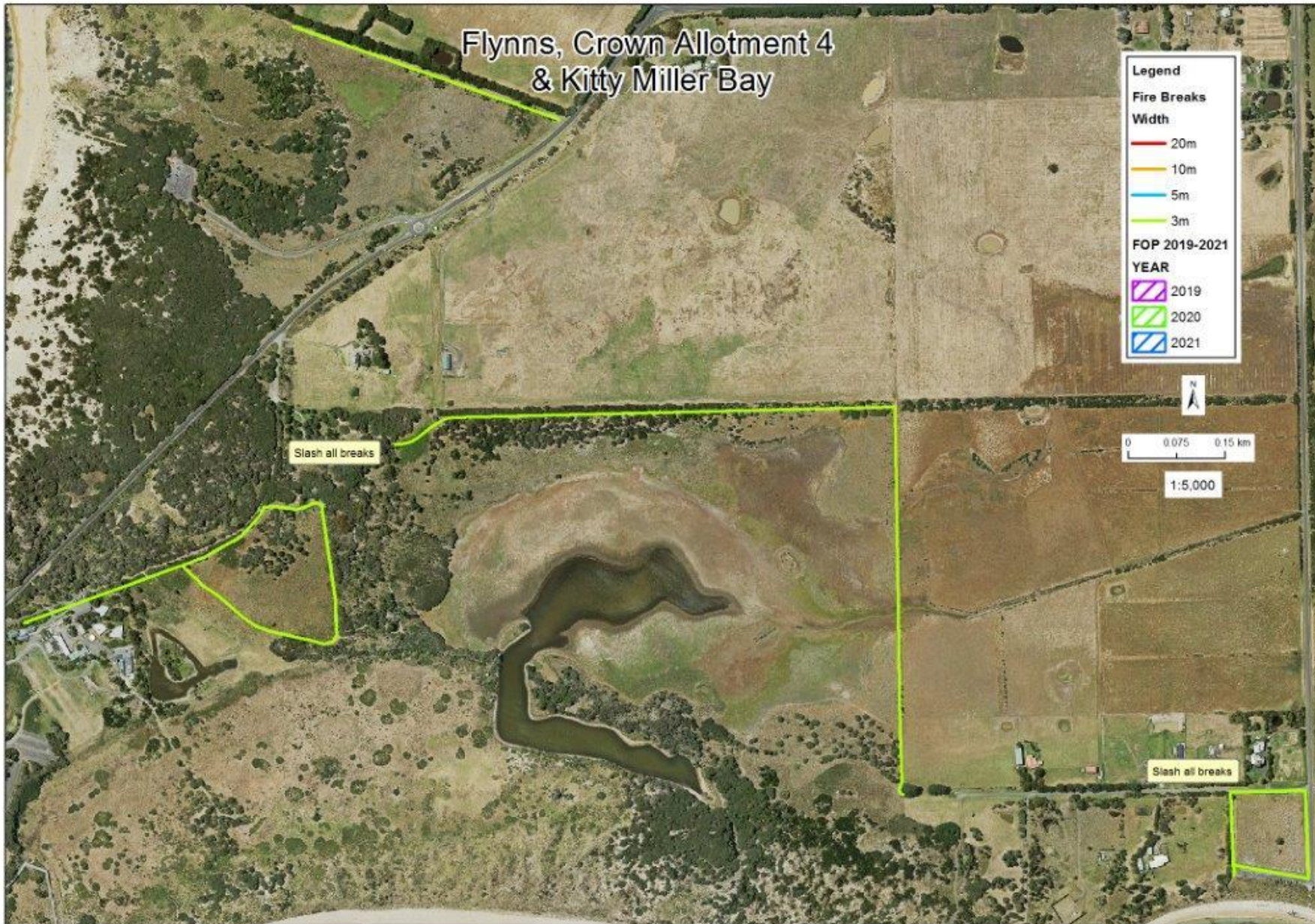
Table 1: Fuel Reduction Burns 2019 - 2021

Year	Season	Key Area	Location	Size (Hectares)	Burn Name	Treatment Objective
2019	Autumn	C	Berry's Beach	1.20	Storm Bay	Ecological
2019	Autumn	F	Fishers Wetland	0.4	Tall Wheat Grass	Ecological
2020	Autumn	C	Berry's Beach	2.21	Red Cliff Head A	Ecological
2021	Autumn	C	Berry's Beach	1.06	Red Cliff Head B	Ecological

Key Area A



Map 3: Summerland Peninsula showing fire breaks to be slashed; wet breaks to be maintained.



Map 4: Fire breaks to be maintained at Flynn's Beach, Crown Allotment 4 and Kitty Miller Bay.

Key Area B

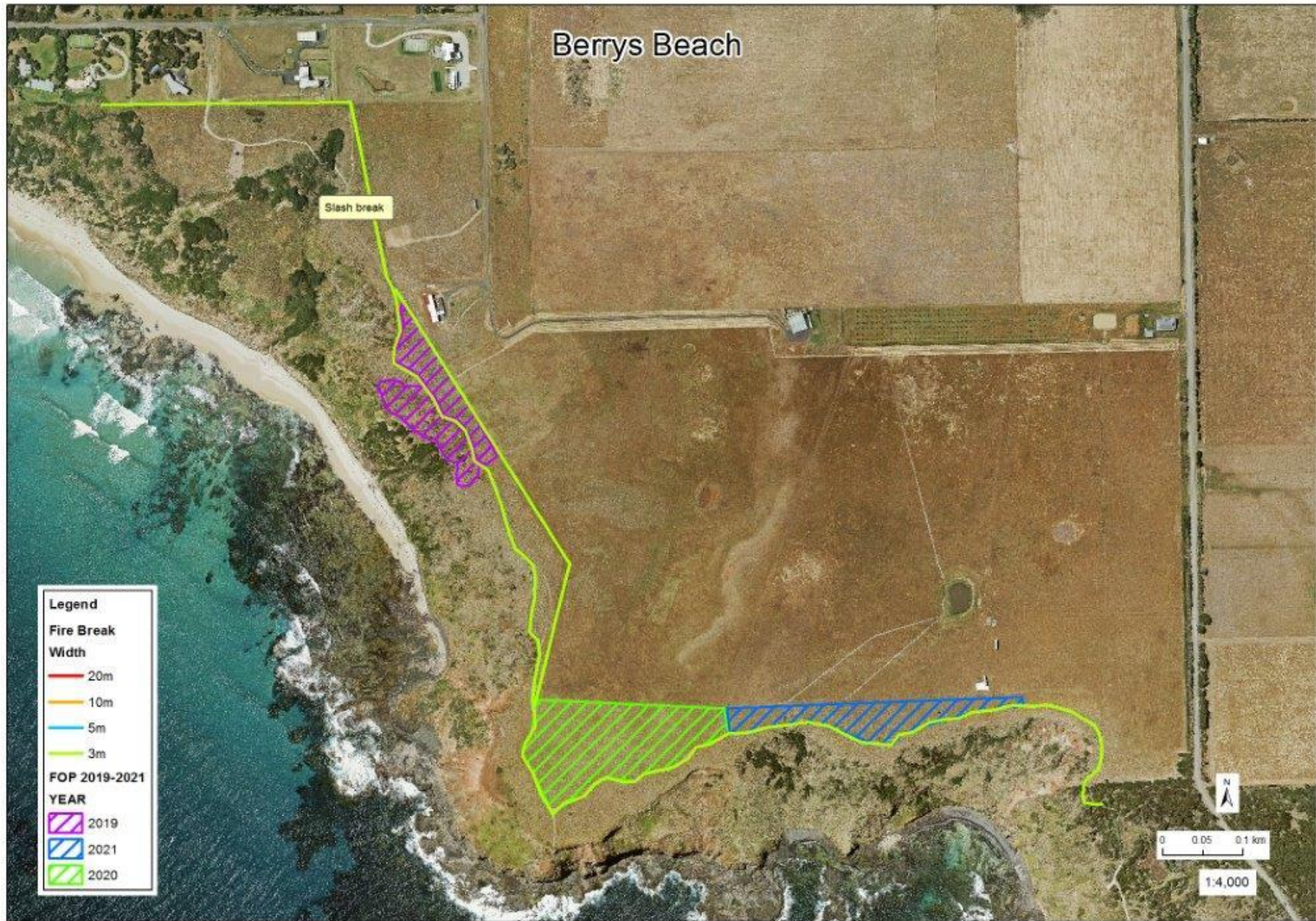


Map 5: Ventnor (Cadogan Ave) showing fire break to be maintained annually.

Key Area C

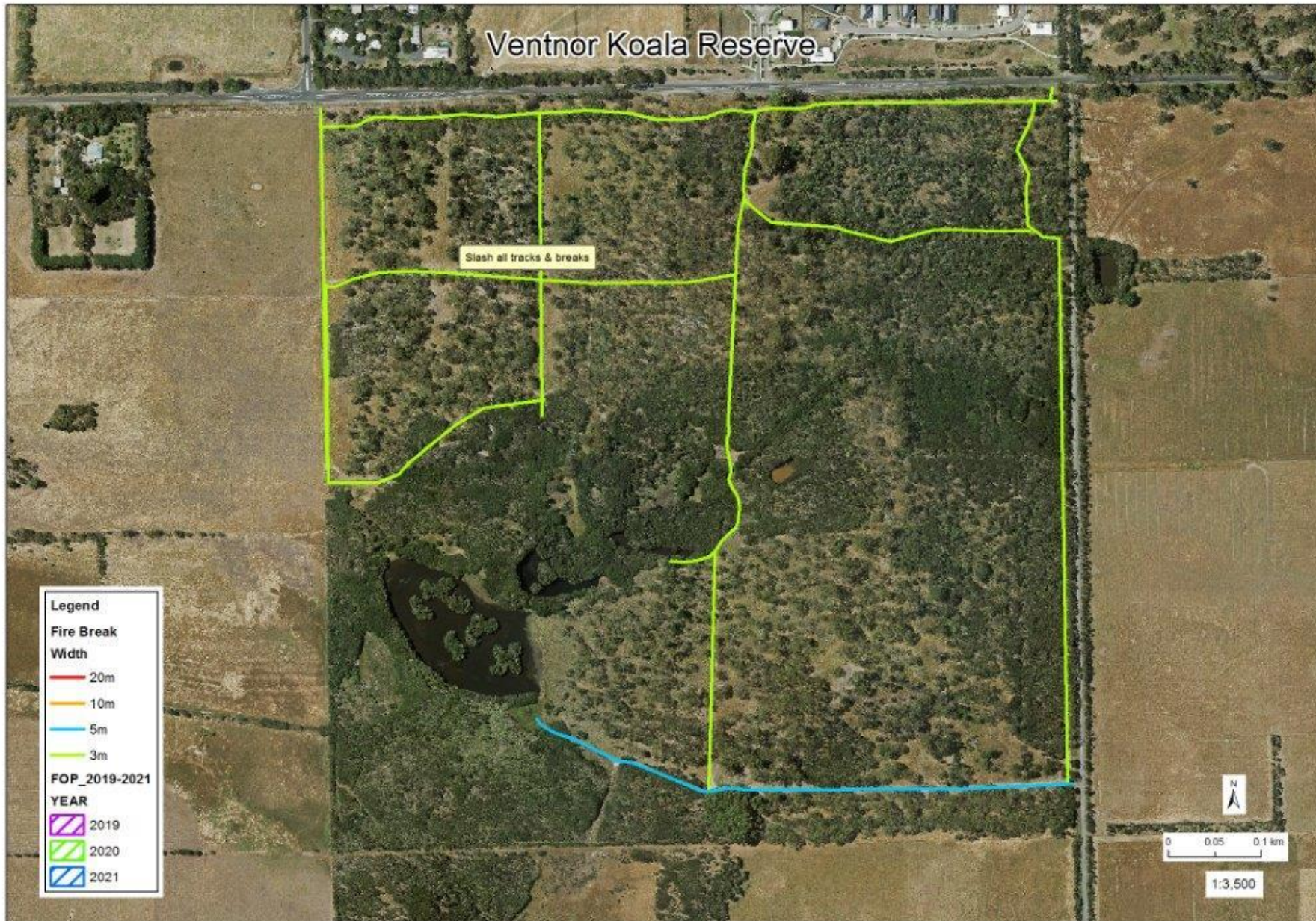
Burn treatment:

Year	Season	Location	Size (Hectares)	Burn Name	Treatment Objective
2019	Autumn	Berry's Beach	1.20	Storm Bay	Ecological – Eradication of introduced weed species to create short tailed shearwater habitat.
2020	Autumn	Berry's Beach	2.21	Red Cliff Head A	Ecological-Eradication of introduced weed species
2021	Autumn	Berry's Beach	1.06	Red Cliff Head B	Ecological-Eradication of introduced weed species



Map 6: Berrys Beach showing fire break to be slashed annually and proposed ecological burns for 2019- 2021.

Key Area D



Map 7: Ventnor Koala Reserve showing fire breaks to be maintained 2019-2021.



Map 8: Koala Conservation Centre and Five Ways Reserve showing fire breaks to be slashed, proposed burn at Five Ways Reserve and annual burn pile in works yard.



Map 9: Oswin Roberts Reserve showing fire breaks and tracks to be maintained annually 2019 and 2021.

Key Area E

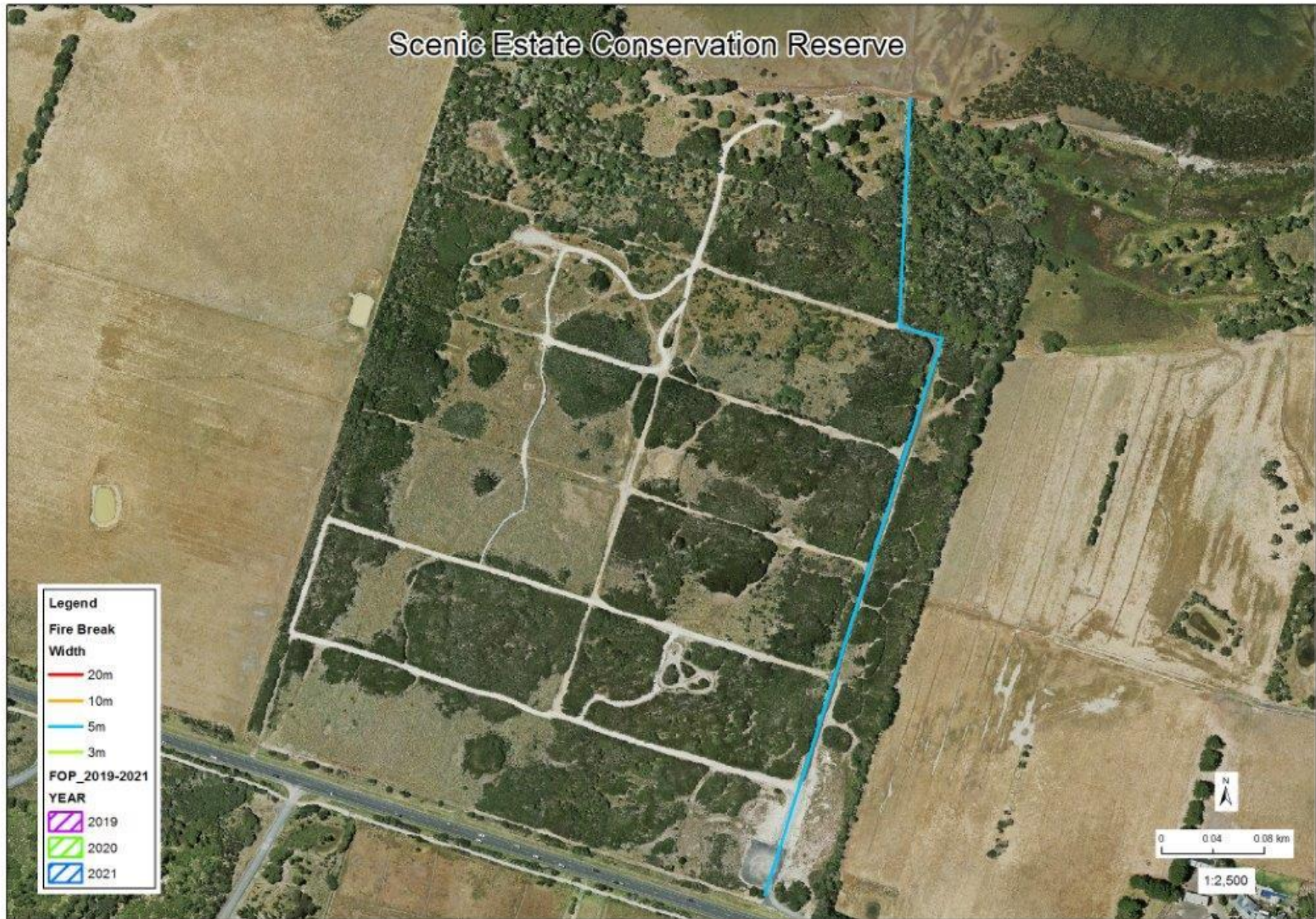


Map 10: Silverleaves, Rowell Swamp and Rhyll Swamp showing fire breaks to be maintained annually.

Key Area F

Burn treatments:

YEAR	Season	Location	Burn Name	Size (HECTARES)	Treatment Objective
2019	Autumn	Fishers Wetland	Tall Wheat Grass	0.08	Ecological: reduce cover (biomass) of Tall Wheat Grass. Burn to be followed by spot spray of any re-sprouts and revegetation of native grasses.



Map 9: Scenic Estate showing firebreaks to be maintained annually



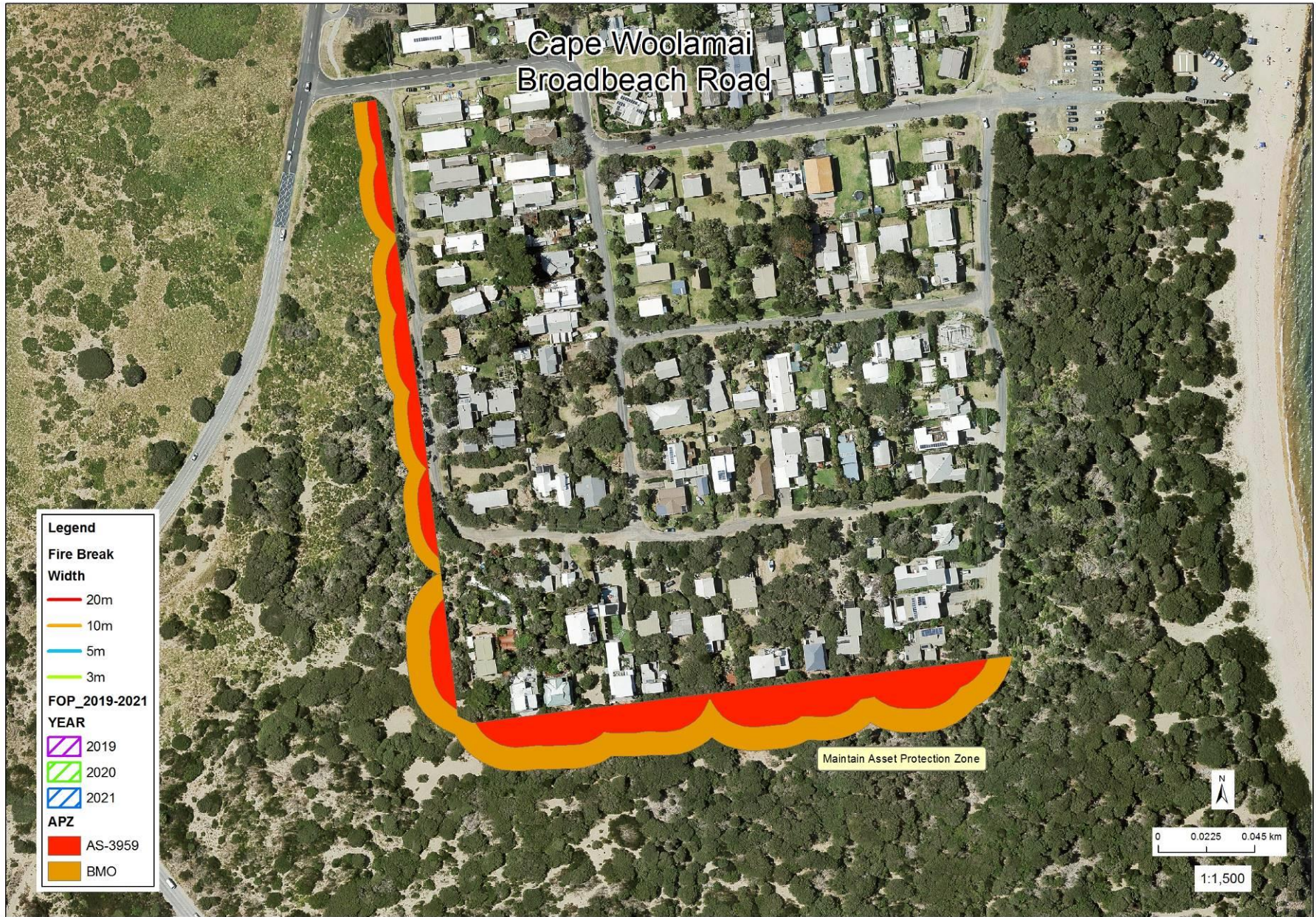
Map 10: Churchill Island, Fishers Wetland & Newhaven Swamp pump station showing fire breaks to be maintained, annual burn pile and proposed planned burns to 2019.

Key Area G



Map 11: Cape Woolamai (Princeton Avenue Reserve) depicting Asset Protection Zones (APZ) and management segments to be weeded and heap burnt each year to 2020.





Map 13: Cape Woolamai showing tracks Asset Protection Zones around Broadbeach Road.



Map 14: Cape Woolamai showing tracks to be slashed.